

"B" Whole Tone - using scale tones

ascending

Measures 1-6 of the 'B' Whole Tone scale. The notation is in treble clef with a 2/4 time signature. The notes are: B4, C5, D5, E5, F5, G5, A5, B5, C6, D6, E6, F6, G6, A6, B6, C7.

1 2/M2

Measures 7-12 of the 'B' Whole Tone scale. The notation is in treble clef. The notes are: C7, D7, E7, F7, G7, A7, B7, C8, D8, E8, F8, G8, A8, B8, C9.

7

Measures 13-18 of the 'B' Whole Tone scale. The notation is in treble clef. The notes are: D8, E8, F8, G8, A8, B8, C9, D9, E9, F9, G9, A9, B9, C10, D10, E10.

13

Measures 19-24 of the 'B' Whole Tone scale. The notation is in treble clef. The notes are: E10, F10, G10, A10, B10, C11, D11, E11, F11, G11, A11, B11, C12, D12, E12.

19

4/M3

Measures 25-30 of the 'B' Whole Tone scale. The notation is in treble clef. The notes are: F11, G11, A11, B11, C12, D12, E12, F12, G12, A12, B12, C13, D13, E13, F13, G13.

25

Measures 31-36 of the 'B' Whole Tone scale. The notation is in treble clef. The notes are: G12, A12, B12, C13, D13, E13, F13, G13, A13, B13, C14, D14, E14, F14, G14, A14.

31

Measures 37-42 of the 'B' Whole Tone scale. The notation is in treble clef. The notes are: A13, B13, C14, D14, E14, F14, G14, A14, B14, C15, D15, E15, F15, G15, A15, B15.

37

6/T



43



49



55

8/m6



61



67

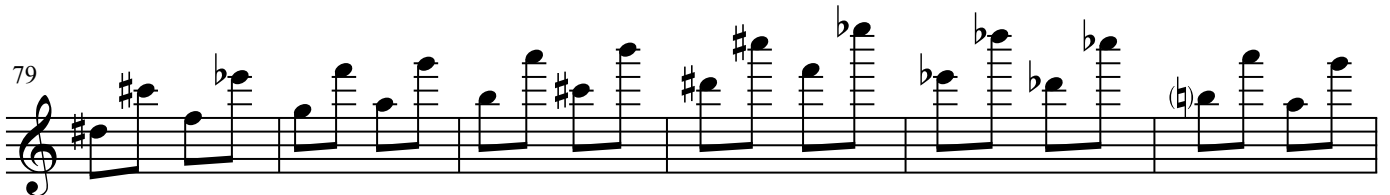


73

10/m7



79



85

